

Sales Information

Installation of EGGER PRO & HOME Design Flooring

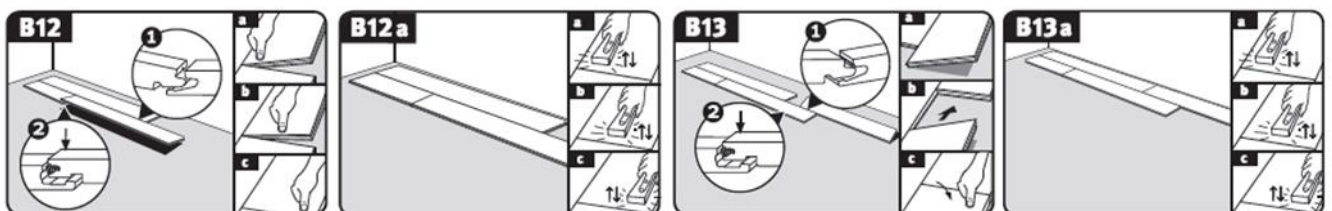
EGGER Design Flooring – New Installation Advice (Update Installation Instruction)

1. Use Tapping Block for comfortable and safe installation

To ensure the optimum locking strength and that the UNIfit! clic system on the face side is locked properly one has to use a wooden block for vertical tapping. Thus the profile locking on the face side is done in 2 steps:

- a) exact positioning of the floor board and pushing down (locking) the face side profile by hands
- b) vertical tapping with wooden block

This installation advice is illustrated on the new package insert (rear page) in the following way.



2. Full-Surface Glueing – relaxation of installation instruction

From now on EGGER PRO & HOME Design Flooring can be installed floating in commercial areas. The floating installation must be done on suitable / approved insulation underlayment. The full-surface glueing of EGGER PRO & HOME Design Flooring in commercial areas is not „MUST“ anymore, but for those who wants to use the advantages of the full-face glueing this remains an optional installation method. The installation instruction will updated accordingly and on the new package insert (rear page) it is illustrated in the following way.



The new package insert (with the named amendments) will be available and used for production from June 2018. By then produced stock material will get the following sticker on each box.



Provisional note:

This sales information / processing instructions has / have been carefully drawn up to the best of our knowledge. The information provided is based on practical experience, in-house testing and reflects our current level of knowledge. It is intended for information only and does not constitute a guarantee in terms of product properties or its suitability for specific applications. We accept no liability for any mistakes, errors in standards, or printing errors. In addition, technical modifications may result from the continuous development of EGGER Design Floorings and their accessories, as well as from changes to standards and public law documents. The contents of this technical data sheet should therefore not be considered as instructions for use or as legally binding. Our General Terms and Conditions apply.